

DAVID MAMET

Born on November 30, 1947 in Flossmoor, Illinois, David Mamet studied at Goddard College in Vermont and at the Neighborhood Playhouse School of Theater in New York before venturing into the professional world of the Theatre. He began his career as an actor and director before achieving success in 1976 with three Off-Off Broadway plays, The Duck Variations, Sexual Perversity in Chicago, and American Buffalo.

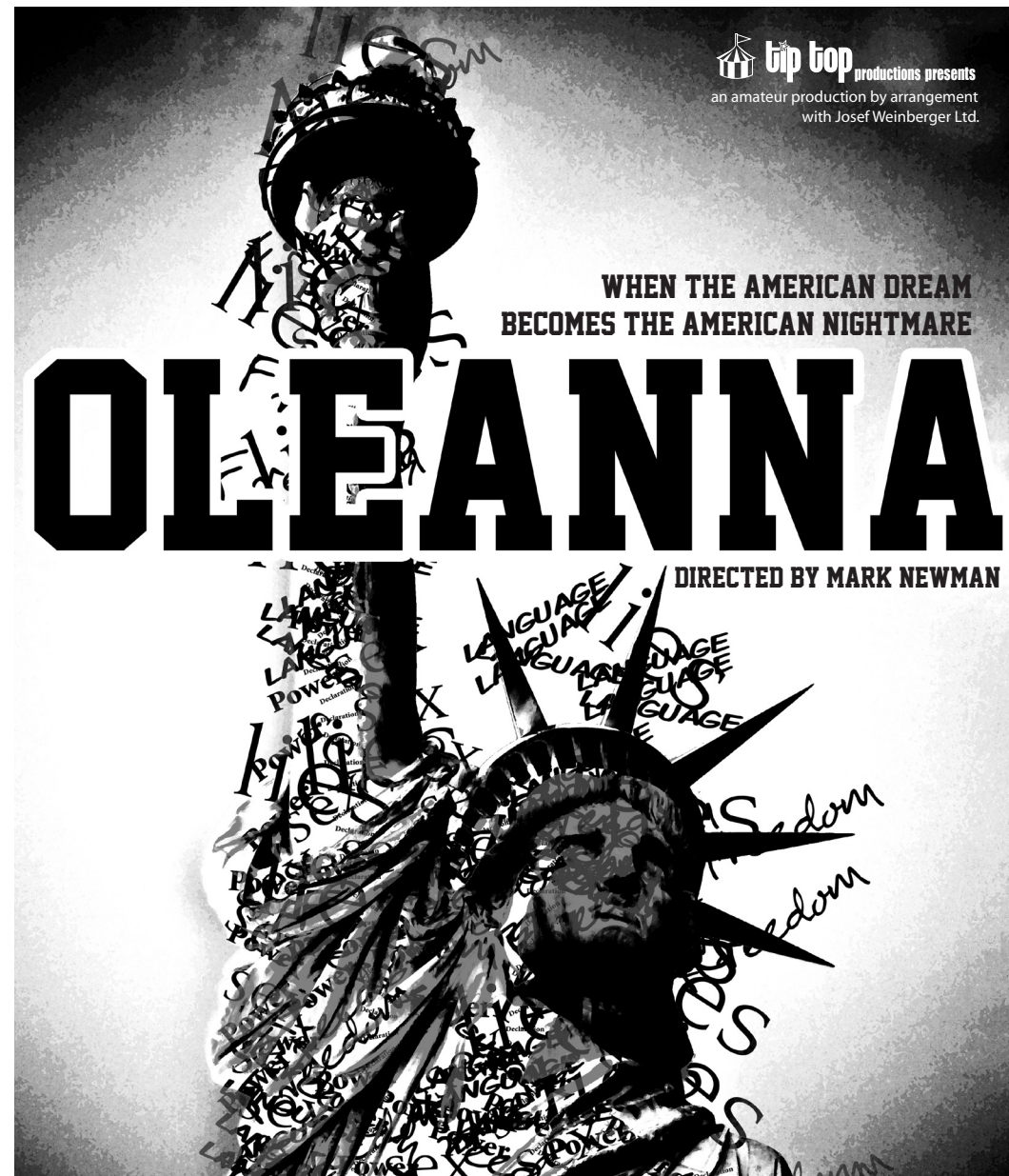
The most recognized element of Mamet's style is his sparse, clipped dialogue. Although reminiscent of such playwrights as Harold Pinter and Samuel Beckett, Mamet's dialogue is so unique that it has become known as "Mametspeak". His language is not so much "naturalistic" as it is a poetic

impression of streetwise jargon. Other signature elements of Mamet's style include minimalism and a lack of stage directions.

Noted for his strong male characters, Mamet's plays often deal with the decline of morality in a world which has become an emotional and spiritual wasteland. In 1984, he was awarded the Pulitzer Prize for *Glengarry Glen Ross* which recreated the atmosphere of a gritty Chicago real estate office in which Levine, an aging salesman, is about to be sacked. He followed up in 1988 with *Speed the Plow* which exposes the dirty underside of another undustry--show business. Perhaps his most controversial play, however, came in 1992 with *Oleanna*, a two-character drama involving charges of sexual harassment between a male professor and one of his female students.

In 1981, Mamet turned his attention to screenwriting and made an impressive debut with his first screenplay, *The Postman Always Rings Twice*, which he adapted from the novel by James Cain. He has since turned out a number of critically acclaimed screenplays including *The Verdict* (1982), *The Untouchables* (1987), *Gleengarry Glen Ross* (1992) and *Wag the Dog* (1998) and is now considered to be among the industry's finest craftsmen.

Mamet has taught at Goddard College, the Yale Drama School and New York University. His awards include the Joseph Jefferson Award, 1974; Obie Award, 1976, 1983; New York Drama Critics Circle Award, 1977, 1984; Outer Circle Award, 1978; Society of West End Theatre Award, 1983; Pulitzer Prize, 1984; Dramatists Guild Hall-Warriner Award, 1984; American Academy Award, 1986; Tony Award, 1987.



CONTAINS STRONG LANGUAGE AND SOME VIOLENCE

20th - 22nd January 2011 at 7:30pm

at The Forum Studio Theatre, Chester

www.chestertheatre.co.uk

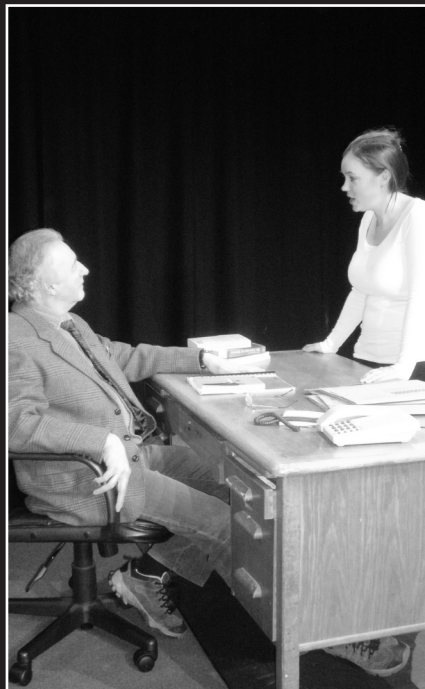
TIP TOP PRODUCTIONS 
the forum
studio theatre
Hamilton Place, Chester, CH1 2BH
Registered Charity 1050409

OLEANNA

'Oleanna' is a masterpiece of modern theatre from America's greatest living playwright, David Mamet. When it was first performed, in 1992, audiences actually came to blows as they left the theatre. Nearly 20 years later it has lost none of its power - battle lines are drawn; sides are taken.

John is a self-centered college professor preoccupied with his bid for tenure and negotiations for a house that he and his wife want to buy. Carol, one of his students, comes by John's office after class; she's failing his course and is obviously confused by the material. Not really paying attention to her, John discusses his philosophies about education in an abstract manner rather than offering concrete suggestions on how to improve her grades. The discussion becomes confrontational and eventually Carol leaves. Several days later, Carol returns, announcing that on the advice of her "group" that she is filing sexual harassment charges against John based on a broad interpretation of his statements. If Carol's suit is successful, it could cost John his job -- and the house he's always wanted.

Mamet's play is now studied as well as watched. It has been made into a film and rightly regarded as a milestone of confrontational theatre. Although in every sense a traditional play it is also inescapably interactive too - it is simply impossible to watch without taking a side.

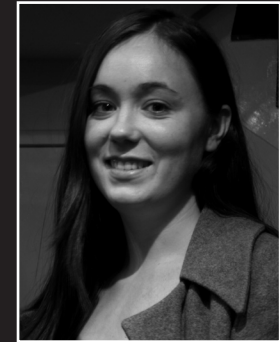


CAST



BILL ROBERTSON
John

Bill returned to TipTop last year to act alongside director Mark Newman, in "Up'n'Under", after playing Dr. Prospero in "Return to the Forbidden Planet" some years ago. Bill's theatre work has been varied and has spanned both the Professional and non-professional worlds. From being eaten by a plant as Mushnik in "Little Shop of Horrors" to playing the dysfunctional and bald Rudyard Kipling in "My Boy Jack". Bill is currently touring Schools in a professional production of "Sleeping Beauty" (playing a "Fairy"; the kind with wings and a wand). Bill trained as a professional Actor, at Drama Studio London and has appeared on TV ("Taggart") and Film ("In the Name of the Father") as well as taking numerous stage roles.



LIZZIE O'SULLIVAN
Carol

Lizzie studied Drama at the University of Wales Aberystwyth where after graduating she worked as an assistant technician for the Aberystwyth Arts Centre. Lizzie has worked with Tip Top productions for the last three years as a stage manager and though ordinarily you would find her hard at work behind the scenes of many of tip top's productions, as a first for the company you will now find her treading the boards in David Mamet's Oleanna. She has finally given in to the acting bug and is now looking forward to the challenge of playing one of Mamet's most renowned and complex creations.

Director	Mark Newman
Stage Manager & Sound	Andrew Roberts
Lighting	Ian Jones
Graphics	Lisa Evans